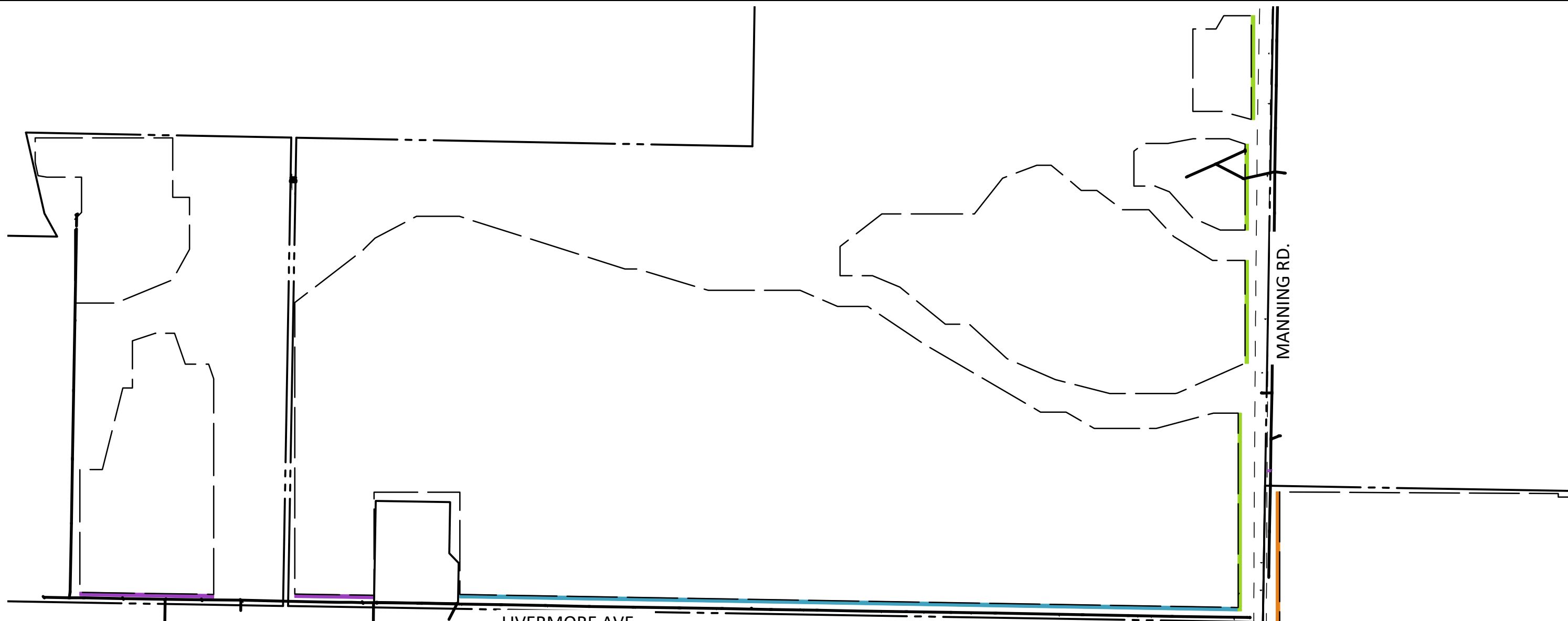


Appendix J

Conceptual Landscape Plan

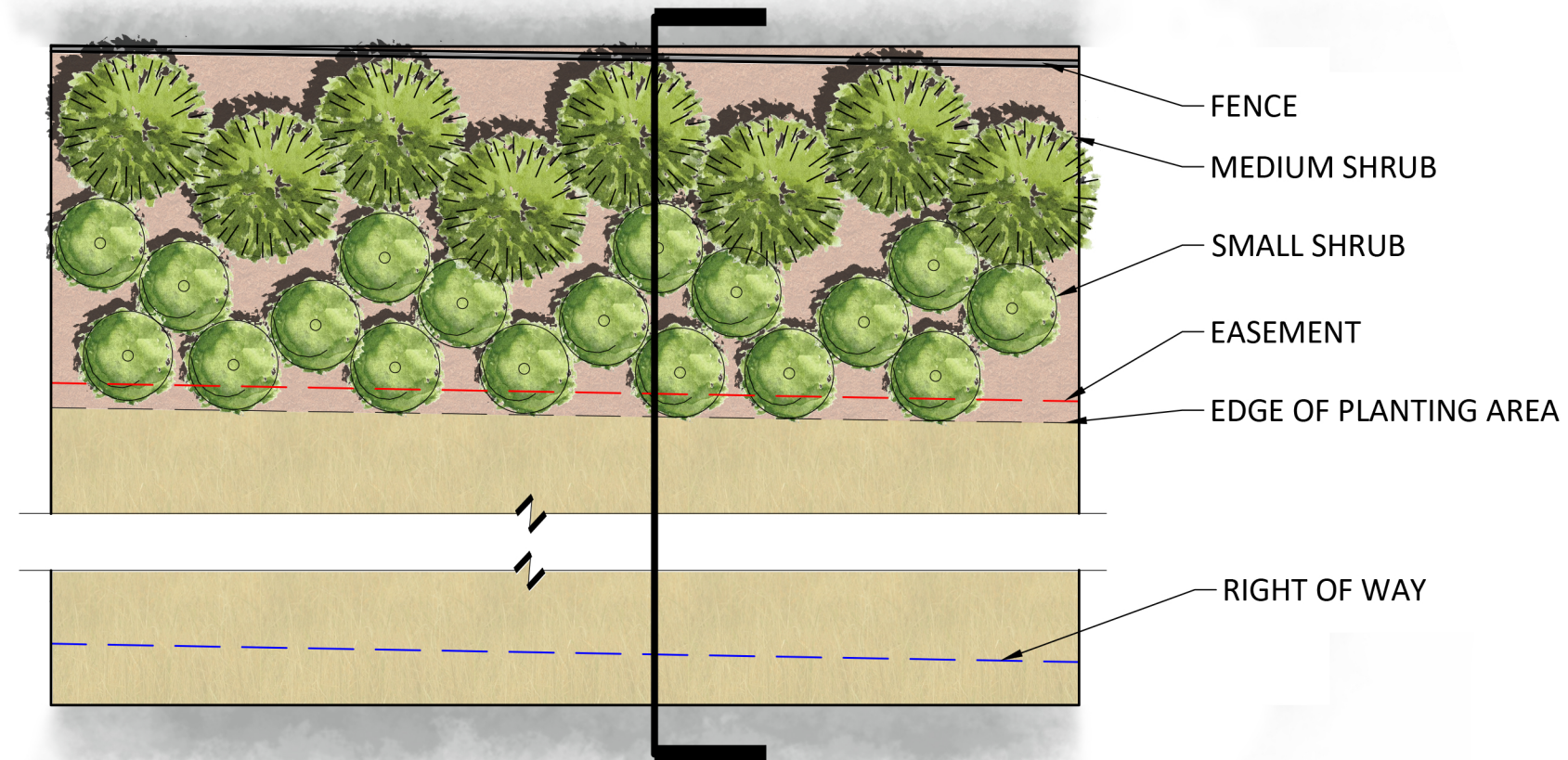
This page intentionally left blank



LEGEND

- PLANTING AREA 1 - 15'-20' WIDE. SMALL AND MEDIUM SHRUBS. OVERLAPS OVERHEAD POWER EASEMENT
- PLANTING AREA 2 - 15'-20' WIDE. SMALL, MEDIUM, AND LARGE SHRUBS. OVERLAPS UNDERGROUND POWER EASEMENT
- PLANTING AREA 3 - 20' WIDE. SMALL, MEDIUM, AND LARGE SHRUBS AND TREES. OVERLAPS UNDERGROUND POWER EASEMENT.
TREES WILL BE PLANTED OUTSIDE OF EASEMENT.
- PLANTING AREA 4 - 15'-20' WIDE. SMALL, MEDIUM, AND LARGE SHRUBS. NO EASEMENT OVERLAP.

AREA 1 PLAN

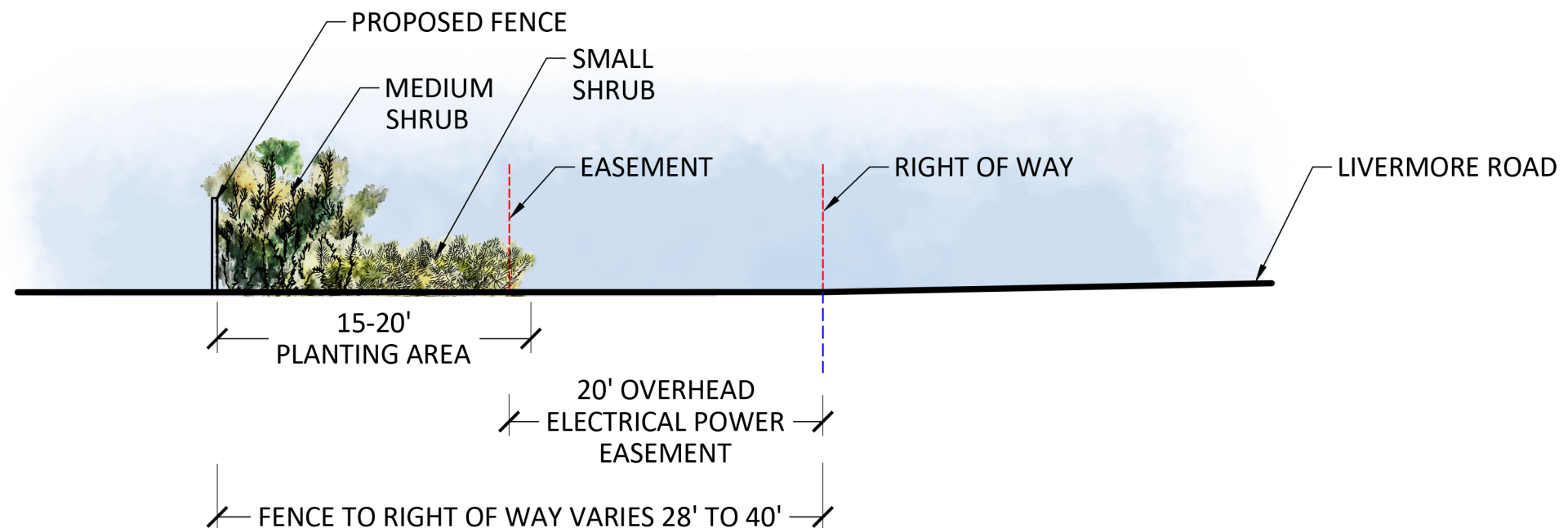


AREA 1 SECTION

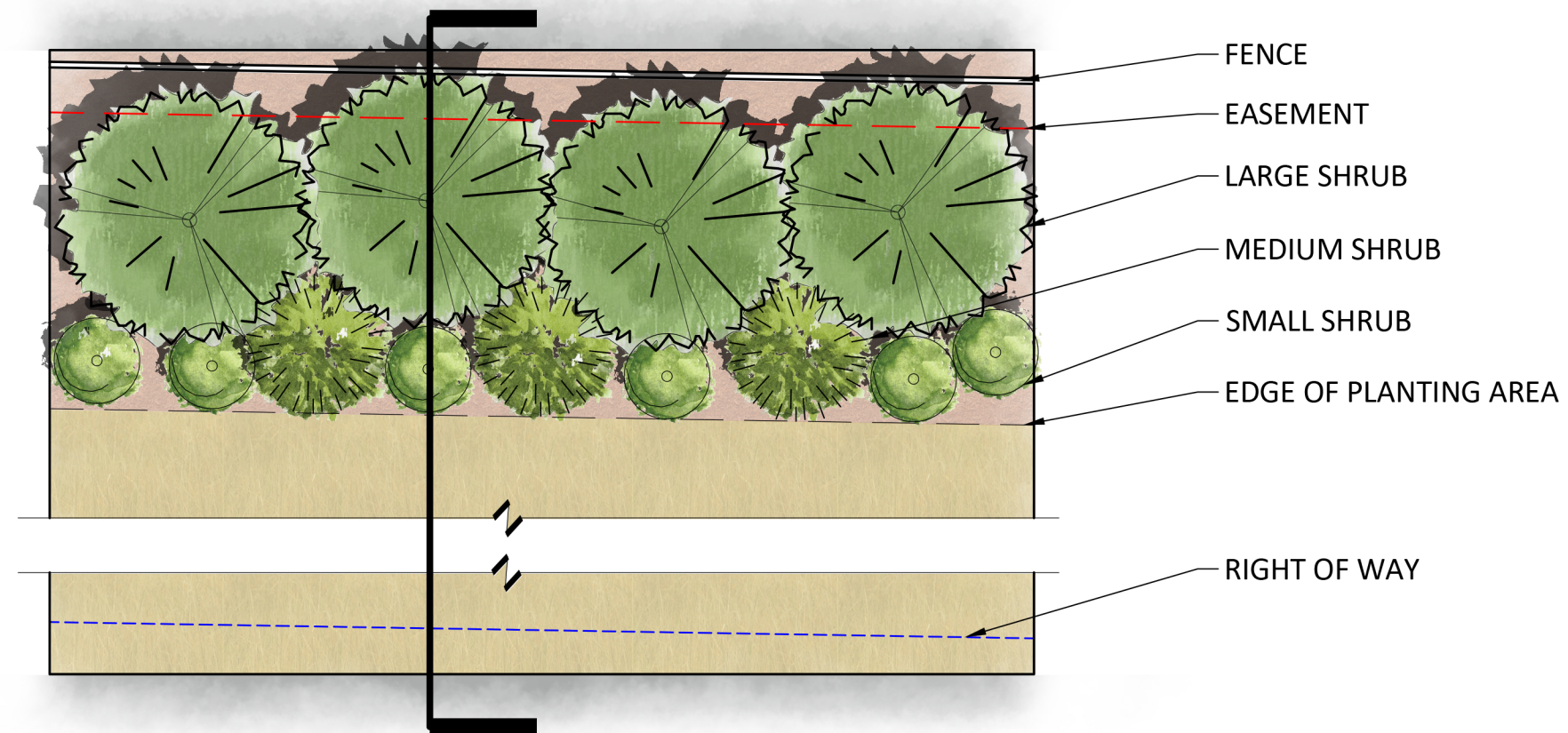
- TALL SHRUBS: 10-15' TALL
- MEDIUM SHRUBS: 5-10' TALL
- SMALL SHRUBS: <5' TALL

* FOR PLANT LIST SEE SHEET 8

* SOME SHRUB PLANTING MAY OCCUR WITHIN THE EASEMENT



AREA 2 PLAN

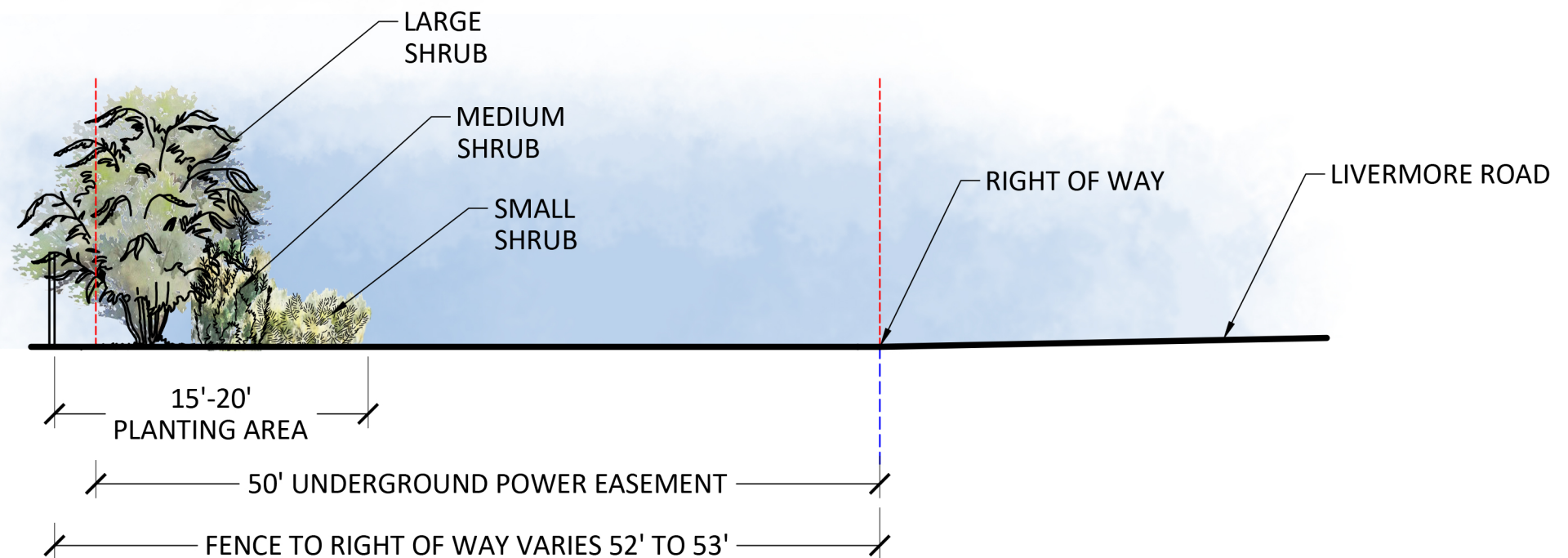


AREA 2 SECTION

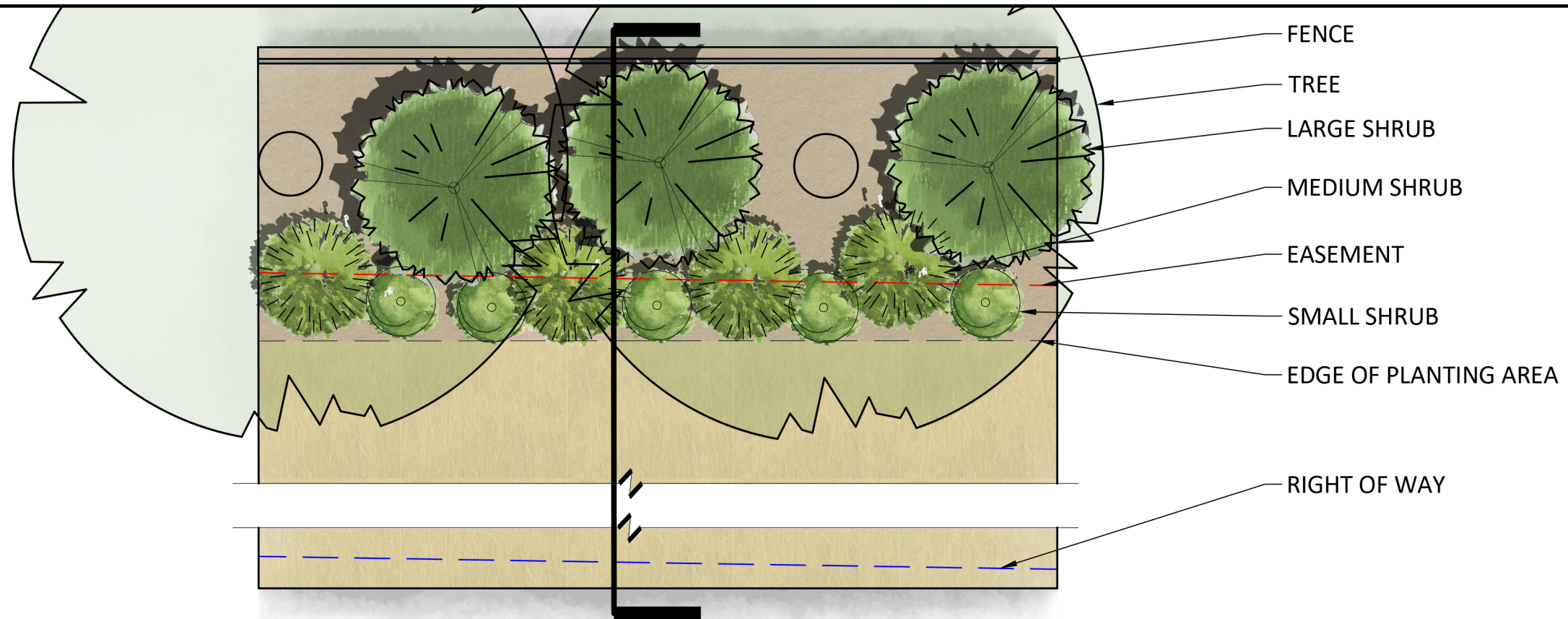
- TALL SHRUBS: 10-15' TALL
- MEDIUM SHRUBS: 5-10' TALL
- SMALL SHRUBS: <5' TALL

* FOR PLANT LIST SEE SHEET 8

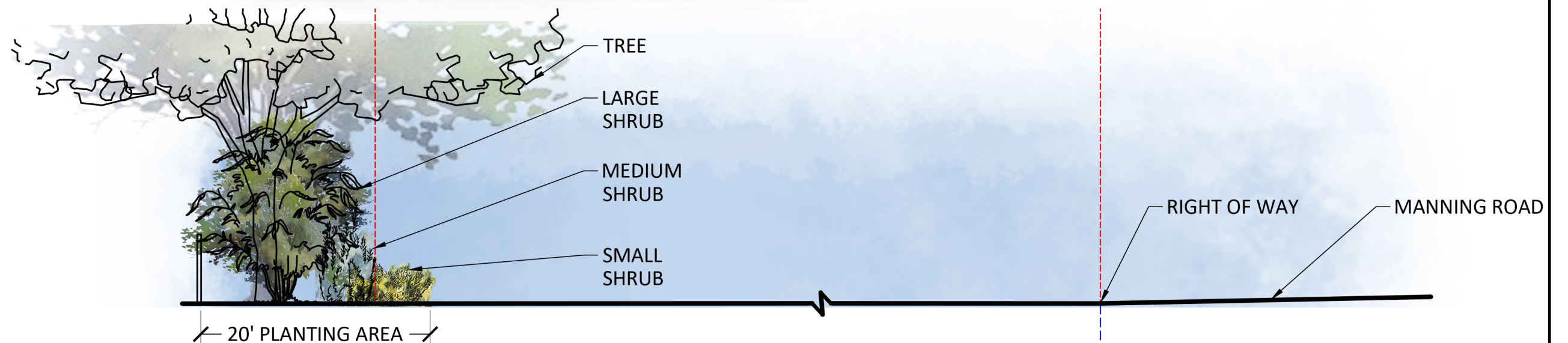
* SOME SHRUB PLANTING MAY OCCUR WITHIN THE EASEMENT



AREA 3 PLAN



AREA 3 SECTION

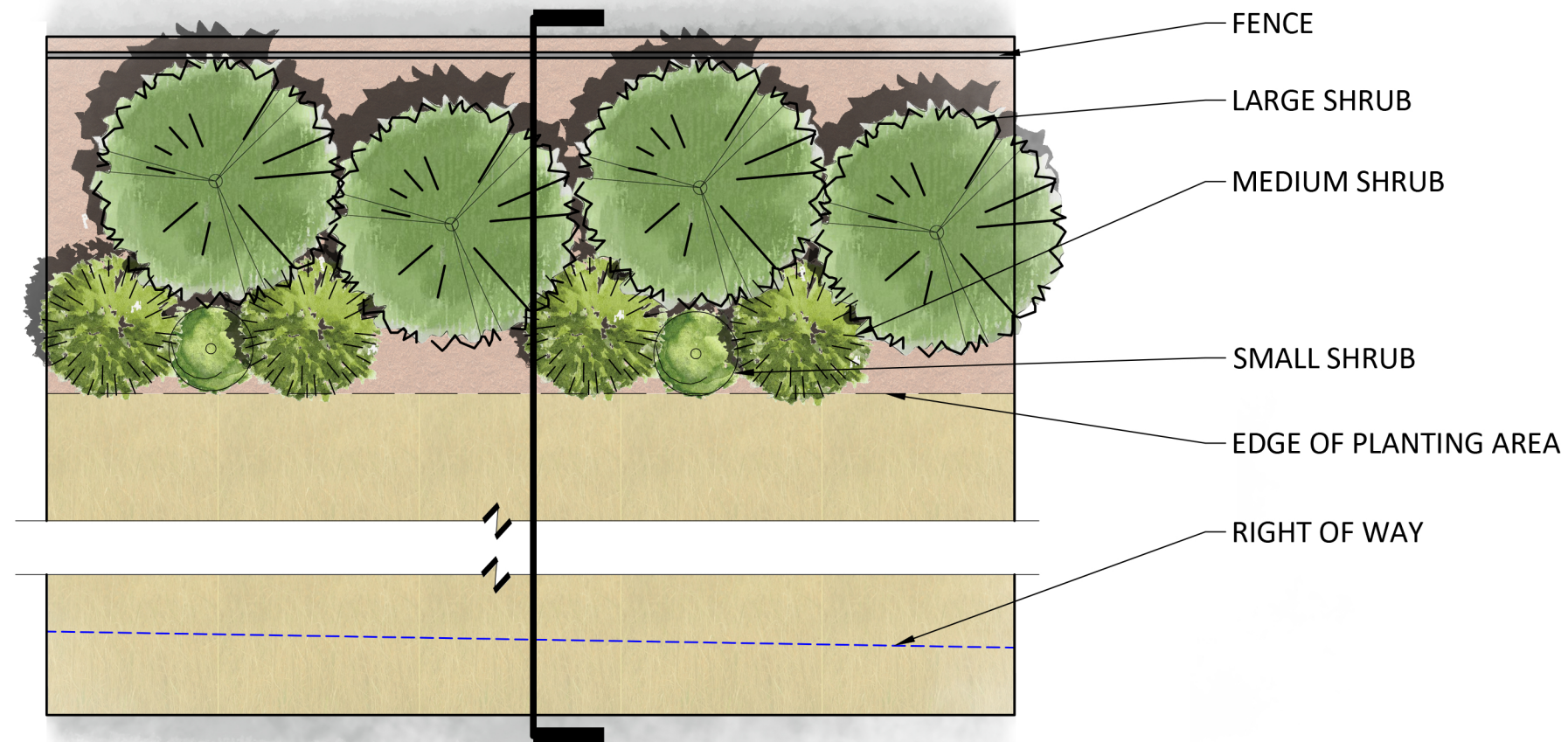


- TALL SHRUBS: 10-15' TALL
- MEDIUM SHRUBS: 5-10' TALL
- SMALL SHRUBS: <5' TALL

* FOR PLANT LIST SEE SHEET 8

* SOME SHRUB PLANTING MAY OCCUR WITHIN THE EASEMENT, ALL TREE PLANTING TO BE OUTSIDE OF EASEMENT

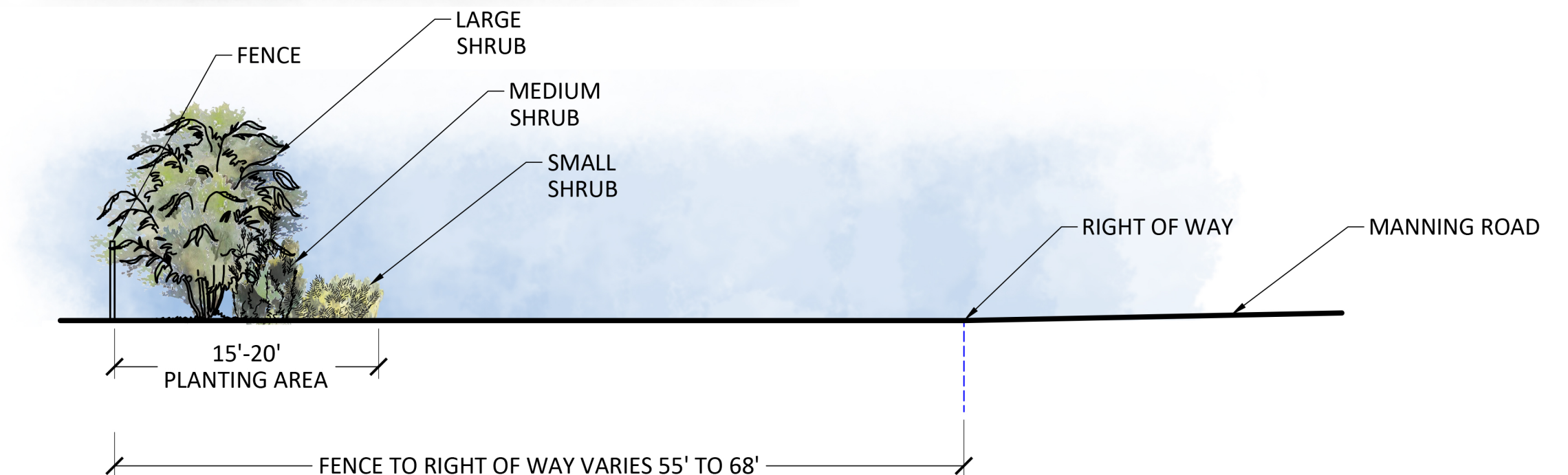
AREA 4 PLAN



AREA 4 SECTION

- TALL SHRUBS: 10-15' TALL
- MEDIUM SHRUBS: 5-10' TALL
- SMALL SHRUBS: <5' TALL

* FOR PLANT LIST SEE SHEET 8



Trees



Arbutus x 'Marina' - Marina strawberry tree



Calocedrus decurrens - Incense cedar



Celtis occidentalis - Common hackberry



Cercis occidentalis - Western redbud



Pinus canariensis - Canary Island pine



Quercus douglasii - Blue oak



Quercus lobata - Valley oak



Quercus agrifolia - Coast live oak

Tall Shrubs



Aesculus californica - California buckeye



Buddleja alternifolia - Fountain butterfly bush



Ceanothus thyrsiflorus 'Snow flurry' - Snow flurry mountain lilac



Garrya elliptica 'James Roof' - James Roof coast silktassel



Fremontodendron californicum - Flannelbush



Quercus berberidifolia - California scrub oak

Medium Shrubs



Arctostaphylos densiflora ‘Vine Hill’ - Vine Hill Manzanita



Callistemon viminalis ‘Slim’ - Slim bottlebrush



Ceanothus thyrsiflorus ‘El Dorado’ - El Dorado California lilac



Heteromeles arbutifolia - Toyon



Ribes malvaceum - Chapparral currant



Rhus integrifolia - Lemonade berry

Low Shrubs



Arctostaphylos ‘Sunset’ - Sunset manzanita



Ceanothus ‘dark star’ - Dark star mountain lilac



Cistus x purpureus - Orchid rockrose



Lupinus albifrons - Silver lupine



Muhlenbergia rigens - Deer grass



Salvia ‘Phyllis Fancy’ - Phyllis fancy sage



Symphoricarpos mollis - Creeping snowberry

| ARAMIS SOLAR - SCREENING PLANT LIST | | | | | | | | | | | |
|---|---|-----------|----------------|----------------------|-------------------|---------------|------|-----------------------|-------------------------------------|---|--|
| Scientific Name | Common Name | Water Use | Container Size | Height Upon Planting | Height at 5 years | Mature Height | EG/D | Flower Season | Flower color | Attracts pollinators | |
| Trees | | | | | | | | | | | |
| <i>Arbutus x "Marina"</i> | Marina strawberry tree | L | 15 gal | 2.5-5' | 8-11' | 25-50' | EG | Fall-winter | White flower, red fruit | Bees, butterflies, hummingbirds, and others | |
| <i>Calocedrus decurrens</i> | Incense cedar | L | 15 gal | 3-6' | 9-12' | 50-75' | EG | N/A | N/A | N/A | |
| <i>Celtis occidentalis</i> | Common hackberry | L | 15 gal | 3-6' | 16-16' | 45-80' | D | Spring | Small purple berries | Butterflies, birds | |
| <i>Cercis occidentalis</i> | Western redbud | VL | 15 gal | 2.5-5' | 12-15' | 10-20' | D | Winter, spring | Pink, yellow, red | Bees, hummingbirds, butterflies | |
| <i>Pinus canariensis</i> | Canary Island pine | L | 15 gal | 3-6' | 15-18' | 50'-80' | EG | N/A | N/A | N/A | |
| <i>Quercus douglasii</i> | Blue oak | VL | 15 gal | 3-6' | 7-10' | 30-50' | D | Spring | Inconspicuous, acorn | Habitat for bees, hummingbirds, butterflies | |
| <i>Quercus agrifolia</i> | Coast live oak | L | 15 gal | 3-6' | 7-10' | 25-80' | EG | Spring | Inconspicuous, acorns | Habitat for bees, hummingbirds, butterflies | |
| <i>Quercus lobata</i> | Valley oak | L | 15 gal | 3-6' | 13-16' | 50-100' | D | Spring | Insignificant flower, acorns | Habitat for bees, hummingbirds, butterflies | |
| Tall Shrubs | | | | | | | | | | | |
| <i>Aesculus californica</i> | California buckeye | VL | 15 gal | 1.5-2.5' | 9-11' | 13-40' | D | Summer | White | Bees, butterflies, hummingbirds, and others | |
| <i>Buddleja alternifolia</i> | Fountain butterfly bush | L | 15 gal | 1.5-2.5' | 9-11' | 12-20' | D | Spring | Purple | Bees, butterflies, hummingbirds, and others | |
| <i>Ceanothus thyrsiflorus 'Snow Flurry'</i> | Snow flurry mountain lilac | L | 15 gal | 1.5-2.5' | 11-13' | 10-20' | EG | Spring | White | Butterflies, bees, and others | |
| <i>Fremontodendron californicum</i> | Flannelbush | VL | 15 gal | 1.5-2.5' | 13-15' | 15-20 | EG | Summer, Spring | Yellow, orange | Bees, butterflies, hummingbirds, and others | |
| <i>Garrya elliptica 'James Roof'</i> | Coast silkassel | L | 15 gal | 1.5-2.5' | 9-11' | 6-16' | EG | Winter | White, cream, green | Bees, birds, butterflies | |
| <i>Quercus berberidifolia</i> | California scrub oak | VL | 15 gal | 1.5-2.5' | 7-9' | 15-19' | EG | Winter, Spring | Inconspicuous yellow flower, acorns | Habitat for bees, hummingbirds, butterflies | |
| Medium Shrubs | *Medium Shrubs anticipated to be mature size at 5 years | | | | | | | | | | |
| <i>Arcostaphylos densiflora</i> | Vine Hill Manzanita | L | 5 gal | 1-2' | | 8'-10' | EG | Winter/Spring | pink upside down cup-shaped flower | Bees, hummingbirds, butterflies | |
| <i>Callistemon viminalis 'Slim'</i> | Slim Bottlebrush | L | 5 gal | 1-2' | | 8-10' | EG | All seasons | Red | Bees, hummingbirds, and others | |
| <i>Ceanothus thyrsiflorus 'El Dorado'</i> | El Dorado Ceanothus | L | 5 gal | 1-2' | | 6'-10' | EG | Spring | Blue | Butterflies, bees, and others | |
| <i>Heteromeles arbutifolia</i> | Toyon | L | 5 gal | 1-2' | | 6-10' | EG | Summer | White, red berries | Bees, butterflies, and others | |
| <i>Ribes malvaceum</i> | Chapparral currant | VL | 5 gal | 1-2' | | 5-8' | D | Winter, spring | Pink, purple | Bees, butterflies, hummingbirds, and others | |
| <i>Rhus integrifolia</i> | Lemonade berry | L | 5 gal | 1-2' | | 4'-10' | EG | Spring, summer | White | Bees, butterflies, and others | |
| Low Shrubs | *Small Shrubs anticipated to be mature size at 5 years | | | | | | | | | | |
| <i>Arctostaphylos 'Sunset'</i> | Sunset Manzanita | L | 1 gal | 8"-1.5' | | 3' | EG | Winter | Whitish pink | Bees, hummingbirds, butterflies, and others | |
| <i>Ceanothus 'dark star'</i> | Dark star mountain lilac | VL | 1 gal | 8"-1.5' | | 3-5' | EG | Winter, spring | Blue | Bees & butterflies | |
| <i>Cistus x purpureus</i> | Orchid rockrose | L | 1 gal | 8"-1.5' | | to 4' | EG | Spring, summer | Reddish-purple | Bees, butterflies, and others | |
| <i>Lupinus albifrons</i> | Silver Lupine | VL | 1 gal | 8"-1.5' | | 3-5' | EG | Winter spring, summer | blue, purple, lavender | Butterflies, bees, hummingbirds, and others | |
| <i>Muhlenbergia rigens</i> | Deer grass | L | 1 gal | 8"-1.5' | | 4-5' | G | Spring | Yellow, cream | Provides nesting materials/ structure for native bees | |
| <i>Salvia 'Phyllis Fancy'</i> | Phyllis's fancy sage | L | 1 gal | 8"-1.5' | | 4-5' | EG | Summer | Lt. purple | Bees, butterflies, hummingbirds, and others | |
| <i>Symphoricarpos mollis</i> | Creeping Snowberry | L | 1 gal | 8"-1.5' | | 3-6' | EG | Spring, summer | Pink | Bees and hummingbirds | |